

# HOW TO APPLY

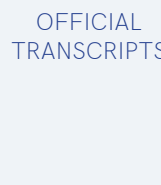
A STEP-BY-STEP GUIDE TO SUBMITTING A SUCCESSFUL PEPPERDINE GRAZIADIO APPLICATION



## ADMISSION REQUIREMENTS



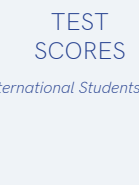
UNDERGRADUATE DEGREE



OFFICIAL TRANSCRIPTS



LETTER TO COMMITTEE



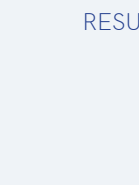
TEST SCORES

International Students Only

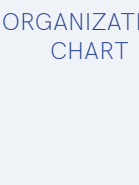


EXECUTIVE EXPERIENCE

Seven years of full-time work experience required



RESUME



ORGANIZATION CHART

## STEP ONE



[HTTPS://BIT.LY/EXECUTIVEMBAS](https://bit.ly/executivembas)

MBA

NAME

EMAIL

PASSWORD

## CREATE ONLINE PROFILE

## STEP TWO



## PREPARE REQUIRED DOCUMENTS

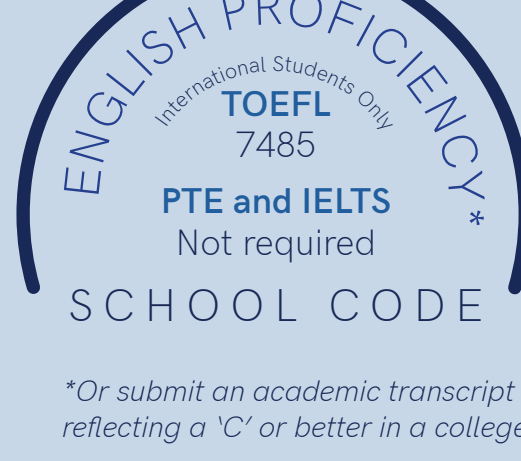
TWO LETTERS OF RECOMMENDATION



LETTER TO COMMITTEE AND ORGANIZATION CHART



TEST SCORES



\*Or submit an academic transcript from an accredited U.S. college/university reflecting a 'C' or better in a college-level English Composition course.

RESUME



OFFICIAL TRANSCRIPTS

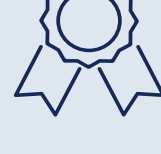
From all previous colleges and universities



Be issued by registrar, by a secure transcript provider



Be provided in English International students: course-by-course evaluation required



Include grade point average (GPA) International students: 4.0 scale (A=4.0)

## STEP THREE

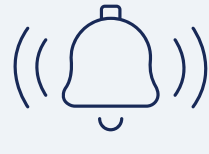
## SUBMIT APPLICATION



## APPLICATION DEADLINES



PRIORITY

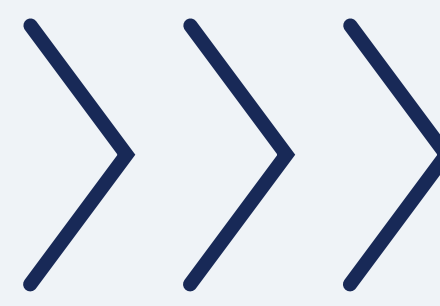


FINAL



## PAY APPLICATION FEE\*

\*Application fee waivers are available. Contact your advisor.



## STEP FOUR

## FACULTY INTERVIEW(S)

By invitation only



## STEP FIVE



## WAIT FOR THE ADMISSION DECISION!

Check your inbox for an email from [PGBS.Admission@pepperdine.edu](mailto:PGBS.Admission@pepperdine.edu).

## WHILE YOU WAIT...



Connect with a current student or alumni



Attend a Graziadio event



Schedule a financial aid consultation and apply for FASFA: [www.fafsa.gov](http://www.fafsa.gov) School Code: 001264

ALL APPLICATIONS ARE CONSIDERED FOR SCHOLARSHIP OPPORTUNITIES



## QUESTIONS?

CONTACT YOUR ADVISOR

VISIT: [bschool.pepperdine.edu/admission/requirements/](http://bschool.pepperdine.edu/admission/requirements/)